



# TECHNICAL DATA SHEET

## MERLIN i-series Aircraft Birdstrike Avoidance Radar



- ❖ The most widely used & tested bird radar system with over 60 units operating worldwide in aviation safety & bird control.
- ❖ The only system in use for real-time, tactical operational birdstrike avoidance by air traffic controllers.
- ❖ Engineered & manufactured for dependable 24-7 operation with high reliability & low maintenance.
- ❖ Backed by leading application specialists for a complete, fully integrated risk management solution.

### SUMMARY SPECIFICATIONS

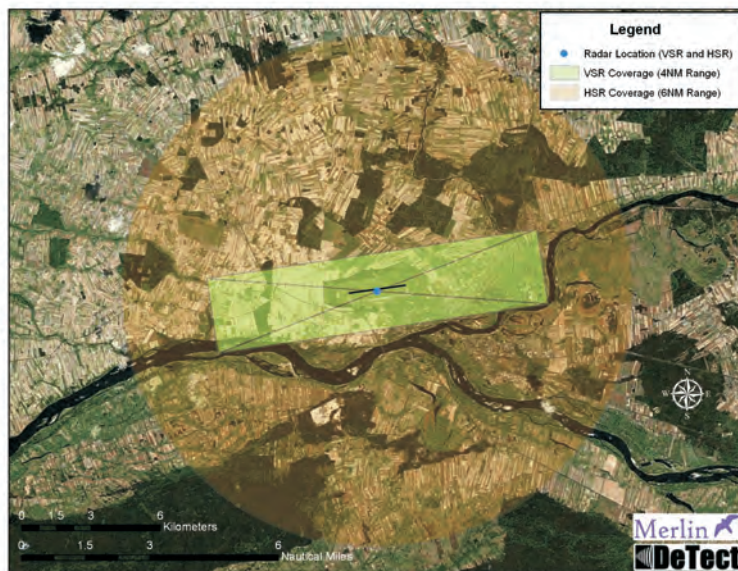
- System:** Industrial series for commercial airports and military airfields
- Application:** Real-time aircraft-bird strike avoidance
- Configuration:** Mobile and fixed designs, fully self-contained with all system hardware, software and integration included
- Radar sensors:** 200w Horizontal Surveillance Radar (HSR, simultaneous dual range); 200w Vertical Scanning Radar (VSR); Synchronized all solid-state sensors with 50,000 hour MTBF; All weather bird detection (HSR & VSR S-band frequency); Dopplerized HSR for superior detection in high clutter environments
- Operation:** Full 3D coverage of single runway with system positioned at the mid-point of the runway with the VSR aligned with approach and departure corridors.
- Operating Range:** HSR 6-8 miles, 360 degrees around the airport with 24 degree AGL detection from ground level and above
- VSR 3-4 miles into runway corridors with 24 degree beam width and detection from ground level to 15,000 AGL

*Multi-runway designs, features & additional options available*



*TOP: MERLIN SS-vh-mc mobile system operating at Boston Logan International Airport, Boston, Massachusetts USA*

*BOTTOM: Illustration of HSR and VSR coverage for single runway airport with the MERLIN system installed at the mid-point of the airport main runway.*



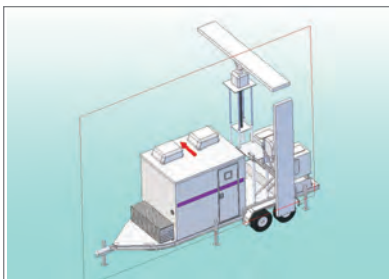
DeTect's MERLIN Aircraft Birdstrike Avoidance Radar system is the most advanced, proven and widely used bird radar technology available for real-time detection and tracking of hazardous bird activity at commercial airports, military airfields, military training and bombing ranges. The MERLIN bird radar is proven, production model technology with over 60 systems currently operating at sites worldwide in aviation safety and bird control applications with documented results in reducing birdstrikes and aircraft damage and delay costs. MERLIN is the only production-model bird radar in operational use for real-time, tactical bird-aircraft strike avoidance by air traffic controllers that includes systems in operation at both commercial airport and military airfields .



*MERLIN systems are available in both mobile & fixed airfield installation designs.*

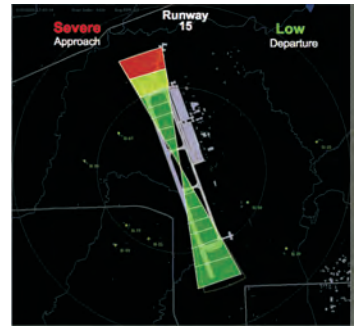
The MERLIN technology includes a wide range of unique features and benefits not available with any other bird radar system:

- Operational, production-model technology
- Real-time display of high risk bird activity with high update rates with accurate target position & altitude data
- Automatic, continuous risk assessment & warnings for tactical bird-aircraft strike risk alerts to controllers & pilots
- Mobile display capabilities to support bird control units
- Advanced clutter suppression & Doppler processing detects birds from near ground level to above aircraft operational altitudes
- Real-time bird mass & size filtering eliminates false positive risk alerts
- State-of-the-art solid state, S-band radar technology with antenna synchronization for all weather bird detection in fog, rain and snow
- Military-grade bird detection tracking algorithms, clutter suppression & insect filtering
- Bird radar software developed specifically for detection & tracking of bird targets
- Simultaneous multi-range operation to support both bird control & air traffic control
- Automatic daily BASH report generation engine



*MERLIN is engineered & manufactured to high performance & reliability standards including US MILSPEC for long useful life & low maintenance.*

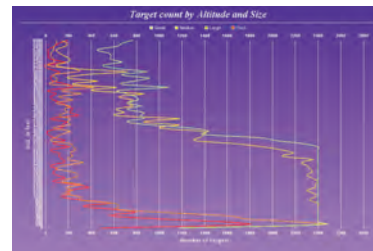
- Complete design, installation, commissioning & long-term support
- Full parts & labor warranty & performance guarantee
- Proven technology tested, validated & operationally used by commercial airports, the US Air Force, Navy & NASA



*MERLIN includes a wide range of intuitive user displays designed by air traffic controllers & pilots.*

With MERLIN, users get more than just a radar - each MERLIN system is supported by DeTect's experts in military and commercial aviation safety, air traffic control, airfield management, airfield bird control and radar remote sensing to provide a cost-effective system that integrates seamlessly and effectively into airfield or airport operations.

The MERLIN bird radar operating software was specifically developed to detect and track bird targets: other bird radars use modified ship or aircraft tracking software which are not designed to identify and track the unique flight signature and RCS variability characteristics of birds in flight. The MERLIN system also processes and displays the bird targets and tracks and current strike risk in real-time with the fastest scan update rate available on the market.



*In addition to real-time data outputs, all target data is recorded to a SQL server for automated & custom data reporting.*

The MERLIN system uses the industry standard dual vertical and horizontal scanning radar configuration to provide simultaneous 3D coverage of critical airspace with dedicated scanning of runways and approach and departure corridors from the ground level up to 15,000 ft AGL and around the airfield out to 8 miles. A key feature of MERLIN is its wide-beam

coverage that detects and provides real-time alerts of hazardous bird activity from aircraft flight operational altitudes to the ground level for real-time tactical bird-aircraft strike risk avoidance with precise positional and altitude data for significant risk targets. With MERLIN's military grade clutter suppression and Doppler processing, the system also provides continuous bird detection near the ground level where 85% of damaging and hazardous birdstrikes occur at commercial airports.

MERLIN systems are available in mobile and fixed installation configurations. For large, multi-runway airports and airfields, multiple fixed-mount sensor packages are installed around the airfield and networked to provide optimal coverage of the airfield and the area around the airport (out to 8 miles).